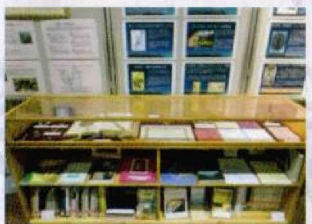


エリザベス・ダフ コーナー

展示内容

1800年の聖心会(学院設立母体)創立から2000年までの学院の歴史。創立者マグダレナ・ソフィア・バラ、学院の守護聖人聖ローズフィリピン・ドゥシェーン、初代院長マザーエリザベス・ダフ等の足跡。国内外の姉妹校の紹介、聖心卒業生の著書など。



岩下 コーナー

展示内容

不二農園、及び学院の前身である温情舎の歴史。農園の開祖である岩下清周、温情舎初代校長の壮一神父(長男)、日本人初の聖心会修道女マザー亀代(三女)の足跡。裾野市をはじめとする地域と学院の産官学協働プロジェクトに関する資料。



メアリー・シェルドン コーナー

教育研究室

建学の精神や聖心の教育研究に役立つ資料。本学院の教育実践の記録など。



不二ベア ルーム

展示内容

不二ベアの歴史とベア作りに関する資料。



Elizabeth Duff Corner

This room was the first room opened as the Archives Room. By using the history of the Society of the Sacred Heart up to the year 2000 we are introducing the footsteps of our foundress, Saint Madeleine Sophie Barat, our school Patron, Saint Philippine Duchesne and our first Superior of Susono, Mother Elizabeth Duff. In the room there are some items which witness exchanges taken places not only among our schools in Japan but also with our sister schools in the 5 Continents. Also holy goods for celebrations belonged to the Society of the Sacred Heart in Shanghai are displayed.



The Iwashitas Corner

This room was opened to commemorate 100th anniversary of Fuji-Farm, managed by a very well-known businessman, Mr. Kiyochika Iwashita before the Society of the Sacred Heart took over. He is the father of Fr. Souichi Iwashita, also his daughter, Kiyoko is the first Japanese Sacred Heart sister. In this room the history of this property and that of school up until now are illustrated. Also the Iwashitas are introduced here in detail. Some episodes of the school's involvement with local communities like Susono city are displayed.



Mary Sheldon Corner

This room is the educational research center. Documents such as Philosophy of Sacred Heart Education, and some helpful books and documents that carry on the spirit and the traditions of the Sacred Heart Schools are kept here for reference. Mary Sheldon is the first vicar of the Society of the Sacred Heart in Japan.



"Fuji Teddy Bear" Corner

This room was set up to illustrate the history of "Fuji Teddy Bear" from its birth to the present day. "Fuji Teddy Bear" unique to Fuji Sacred Heart School is made by students' mothers for sale at the autumn festival each year.

